

HELI

CDD10R-S CDD12R-S Electric Stacker with Initial Lift

Characteristics

- The truck features compact design, small dimensions and excellent visibility.
- The truck adopts 4- points support structure, side positioned tiller and low center of gravity design which featuring excellent stability.
- Double pallet design: two pallet can be handled at one time; initial lift of load leg increases ground clearance to facilitate traffic ability on ramps, dock levelers and bridge.
- Vertical driving wheel offers small turning radius; dustproof waterproof motor is easy for maintenance.
- High efficient electromagnetic parking brake offers good ramp braking performance.
- Low voltage protection setting prolongs the battery life.
- Height adjustable balance wheel ensures the drive wheel life.

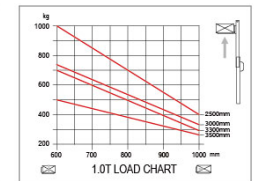
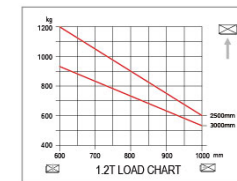
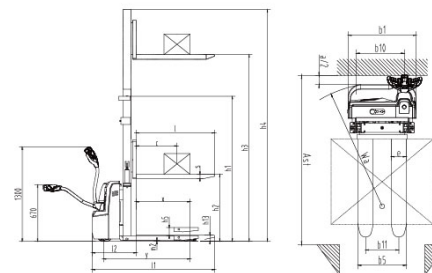
NOTE:

- For trucks with a capacity of 1.0t:**when carrying out double-deck operation, the lifting capacity of the mast (upper pallet) is up to 1000kg, and the lifting capacity of the lower pallet is 0-1000kg, but the total load shall not exceed 1000kg;
- For trucks with a capacity of 1.2t:**when carrying out double-deck operation, the lifting capacity of the mast (upper pallet) is up to 1200kg, and the lifting capacity of the lower pallet is 0-1200kg, but the total load shall not exceed 1200kg.

CDD10R-S CDD12R-S

Manufacturer's Data and Technical Characteristics

Character		HELI	
1.01	Manufacturer	HELI	
1.02	Model	CDD10R-S	CDD12R-S
1.03	Mast type	2-stage mast	
1.04	Load capacity	Q kg	1000
1.05	Load center distance	C mm	600
1.06	Driving mode	Walkie	
1.07	Front overhang	X mm	788
1.08	Wheel base	Y mm	1268
Tyre		Polyurethane	
2.01	Tyre type	Polyurethane	
2.02	Wheels number,Front/rear(X=driven wheels)	1x+1/4	
2.03	Track Width,front	b10 mm	523
2.04	Track Width,rear	b11 mm	390
2.04	Wheel size, front	mm	ø195x70
2.05	Wheel size, rear	mm	ø80x70
2.06	Wheel size, additional	mm	ø150x60
Dimension			
3.01	Lift height	h3 mm	1600/2500/3000/3300
3.02	Height, mast extended	h4 mm	2122/3092/3592/3892
3.03	Height, mast lowered	h1 mm	2122/1872/2122/2272
3.04	Height,lowered	h13 mm	90
3.05	Initial lift	h5 mm	120
3.06	Fork size	s/e/l mm	60/180/1070(1150)
3.07	Overall length	l1 mm	1709/1789
3.08	Length to face of forks	l2 mm	639
3.09	Overall width	b1 mm	800
3.10	Width across forks	b5 mm	570
3.11	Turning radius	Wa mm	1450
3.12	Aisle width with pallet 800Wx1200L,clearance 200	Ast mm	2224
3.13	round clearance	m2 mm	17~137
Performance			
4.01	Travelling speed,laden/unladen	km/h	4.5/5
4.02	Lifting speed,laden/unladen	m/s	0.11/0.14
4.03	Lowering speed,laden/unladen	m/s	0.12/0.12
4.04	Gradeability,laden/unladen	%	6/15
Electrical configuration			
5.01	Drive moter power	kw	0.65
5.02	Lifting moter power	kw	2.2
5.03	Battery voltage	V	24
5.04	Battery capacity	Ah	105(125)
5.05	Battery dimensions l/w/h	mm	329x172x214
5.06	Controller	CURTIS	
5.07	Brake	Electromagnetic	
Weight			
6.01	Total weight(with battery)	kg	605/670/690/702
6.02	Battery weight	kg	60.8



ANHUI HELI CO., LTD.
Add / No.668, FangXing Road, Hefei, China
Fax / +86-551-63639966

Tel / +86-551-63639068(America); 63639258(Europe);
63639358(Asia); 63662105(Africa & Middle East);
63639530(Key Accounts Division); 63662105(Wheel loader)